



# EMERGENCY UTILITY SHUTOFF

Before a disaster, make sure you and family members know where your gas, electricity and water shutoff valves are located. Know **HOW** and **WHEN** to turn them off. Mark the valves with reflective tape and hang a wrench next to the gas valve.

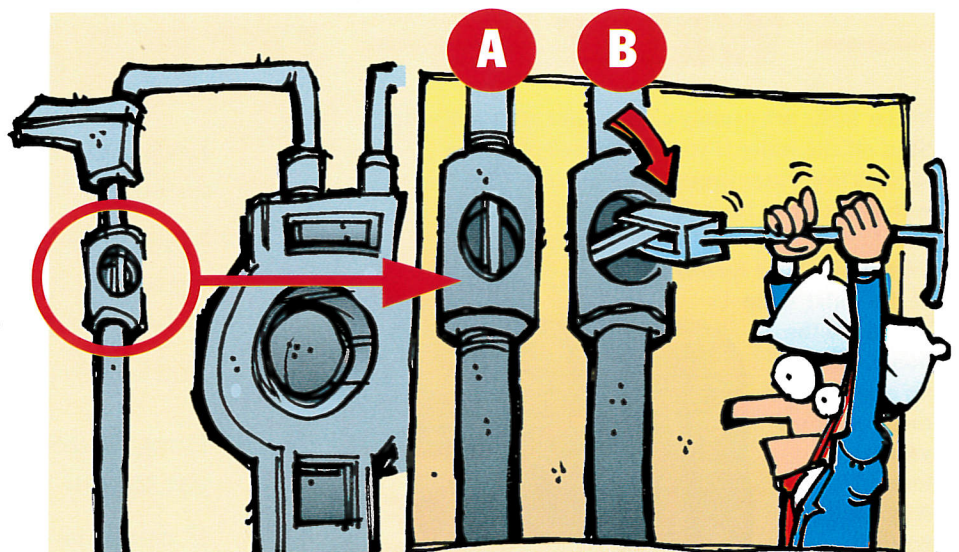
## Gas

The main shut-off valve is located on the inlet pipe next to your gas meter. Attach an adjustable wrench next to the meter. It can be a pipe wrench, a crescent wrench or a special tool designed specifically for turning off valves.

After a disaster, shut off the gas **ONLY** if you smell a strong odor of gas, you hear gas escaping from a broken or disconnected pipe, or you notice dials on the gas meter are spinning around rapidly.

If you suspect a gas leak, get everyone out of the house immediately. To turn off the gas, use the wrench and turn the valve one-quarter turn in either direction so that it is perpendicular to the pipe.

Do not use matches, lighters or open-flame appliances or operate electrical switches until you are sure there is no gas present.



## IMPORTANT!

Once the gas is shut off at the meter, do not try to turn it back on. Call Pacific Gas & Electric (PG&E) or a qualified electrician to restore your gas service.



# EMERGENCY UTILITY SHUTOFF

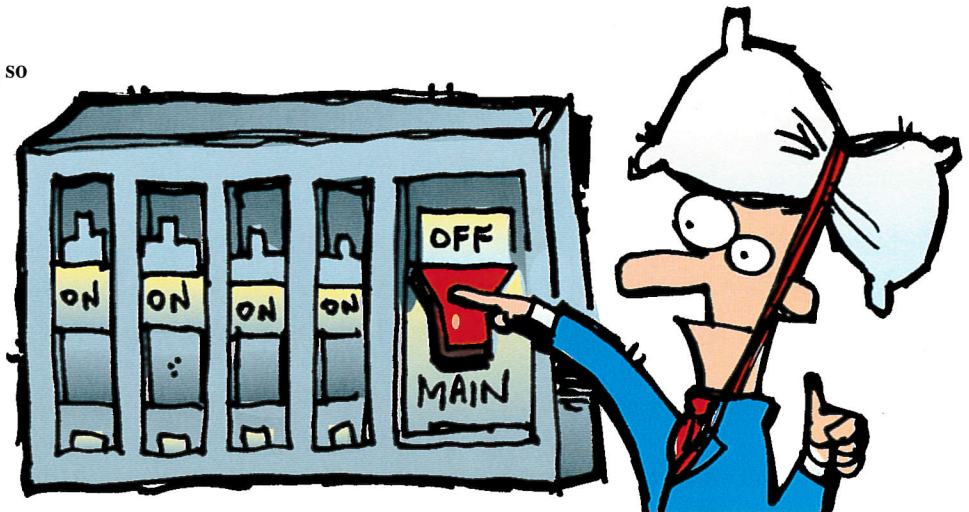


## Electricity

**BEFORE A DISASTER**, determine where your circuit breakers are located. If you have an older house, you may have a fuse box, or both; Make sure you know how to turn them off. If you have questions, check with a licensed electrician.

**AFTER A DISASTER**, check for damage to wiring and shut off the electricity if you suspect a problem. Sparks from electrical switches can ignite leaking gas and cause an explosion.

**GENERATORS** can pose serious safety hazards, so follow all safety instructions provided by the manufacturer. Generators must not connect to another power source, such as PG&E's power lines. You must make sure that electricity from your unit cannot "backfeed" into power lines. Be sure to use your generator correctly. If you do not, you risk damaging your property and endangering your life and the lives of PG&E line workers.



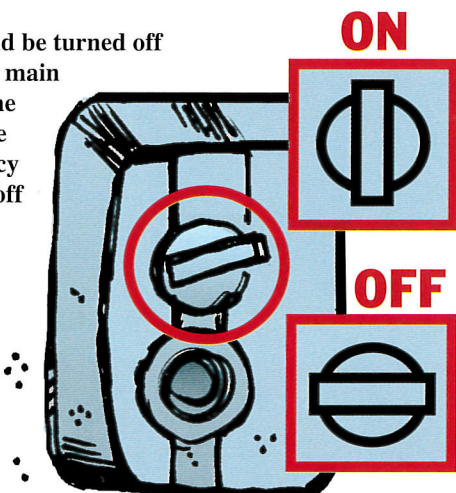
**DO NOT** use candles or matches. Flashlights and lanterns are much safer.

## Water

## UTILITY CHECKLIST

Water leaks are usually easy to spot after a disaster. Shut off the water if you experience problems such as low water pressure or lack of water when you turn the faucet on.

Water should be turned off at the water main leading to the home, where an emergency meter shut-off valve is located. Any good wrench will do the job.



- Locate your gas, electricity and water shutoff valves and learn how and when to shut them off.
- Make sure family members know where valves are located and how and when to turn them off.
- Mark the valves with reflective tape.
- Hang a wrench next to the gas shutoff valve.
- If you have a generator, check with your city and PG&E regarding laws pertaining to its use.
- Make a list of utility phone numbers and keep it handy.

